

# **Section V**

## **Reclassification of English Learners to Fluent English Proficient**

---

**Understanding Reclassification of English Learners  
to Fluent English Proficient**

**Decision Guide: Reclassifying a Student from English  
Learner to Fluent English Proficient**

**Guidelines for Reclassification of English Learners**

**March 2007**

**Prepared by the  
California Department of Education**

# Understanding Reclassification of English Learners To Fluent English Proficient

---

*Education Code* Section 306 defines “English learner” as “a child who does not speak English or whose native language is not English and who is not currently able to perform ordinary classroom work in English...” Reclassification is the process by which students who have been identified as English learners are reclassified to fluent English proficient (RFEP) when they have demonstrated that they are able to compete effectively with English-speaking peers in mainstream classes. Under current law, identified English learners must participate in the annual administration of the CELDT until they are reclassified.

This section contains two documents that illustrate the reclassification process:

- *Guidelines for Reclassification of English Learners* provides detailed information about each of the reclassification criteria
- *Decision Guide: Reclassifying a Student from English Learner to Fluent English Proficient* is a flowchart of the reclassification process.

## Reclassification Guidelines

The State Board of Education (SBE) has established four reclassification criteria, based on *Education Code* Section 313(d), for school districts to use in reclassifying students from English learner to fluent English proficient. The *Guidelines for Reclassification of English Learners*, approved by the SBE in September 2002, describes these four reclassification criteria. The first criterion is an assessment of English-language proficiency, which in California is the CELDT. The next criterion is teacher evaluation of a student’s academic performance, which can be based on the student’s report card grades, grade point average (GPA), or other measure that school districts use to determine students’ academic performance. The third criterion is parent opinion and consultation, which involves parents or guardians, if possible, in a discussion about their student’s English-language proficiency and meeting the guidelines for reclassification. The fourth and final criterion is a comparison of performance in basic skills, which the SBE has indicated should be based on results of the student’s latest California English-Language Arts Standards Test (CST in English-language arts).

The reclassification process is determined locally, using the four criteria. That process may differ from school district to school district, depending on when needed data are available. Typically, CST results are available at the beginning of the school year, and CELDT results for the annual assessment are available in December or January. (The reclassification guidelines are provided on pages V-4 through V-6.)

# Suggested Steps for Reclassification

The second document in this section is the *Decision Guide: Reclassifying a Student from English Learner to Fluent English Proficient* that is based on the four criteria set forth in the reclassification guidelines approved by the SBE. This flowchart walks through each step of the reclassification process. At each step, two bullets are listed that tell school staffs (1) where to look for the data to see if the student meets this criterion and (2) what standard the student needs to achieve to meet this criterion (and whether the school district may set its own policy).

The first step in the process is to review the annual CELDT results for English-language proficiency. For this criterion, the student needs to meet the CELDT definition of proficiency, which is an overall score of early advanced or advanced, and scores are intermediate or above for each of the sub-skill areas: listening, speaking, reading, and writing. If the student meets this criterion, move on to the next step in the chart. If not, the student should remain an English learner.

The second step in the reclassification process is to review the comparison of performance in basic skills. This review focuses on the student's results on the latest CST in English-language arts. The SBE has set a guideline for this cut point at somewhere between basic and midpoint of basic, but it is up to each school district to set an exact cut point. If the student meets this criterion, move on to the next step in the decision chart. If this criterion is not met, the student should remain an English learner.

The third step in the process is a review of the teacher evaluation of student academic performance. This review looks at whether the student meets the academic performance indicators set by the school district. Academic indicators could include the student's grades or whatever criteria the school district has established as its policy for evaluating academic performance. If the student meets the academic performance indicators established by the school district, move on to the next step in the flowchart. If not, the student should remain an English learner.

The fourth step in the process is parental opinion and consultation. If the student has satisfied all criteria for reclassification, then notice should be provided to parents and guardians of their rights to participate in the reclassification process. The notice also should encourage their participation in this process.

Finally, the student should be reclassified to fluent English proficient (RFEP). As part of this process, parents and guardians should be notified, school records should be updated, and the student's progress should be monitored for two years. Monitoring does not mean that the CELDT (e.g., scores on CST in English-language arts) should be administered again; rather, the student's academic achievement and progress should be monitored to be certain the student is continuing to progress. If the student fails to progress, it is necessary to intervene and not allow him or her to fall behind. (The decision guide is provided on page V-7.)

# Guidelines for Reclassification of English Learners

---

## Assessment of English-Language Proficiency

Use the CELDT as the primary criterion. Consider for reclassification those students whose overall proficiency level is early advanced or higher and:

- Listening is intermediate or higher,
- Speaking is intermediate or higher,
- Reading is intermediate or higher, and
- Writing is intermediate or higher.

Those students whose overall proficiency level is in the upper end of the intermediate level also may be considered for reclassification if additional measures determine the likelihood that a student is proficient in English.

- Use most recent available test data.

The above reclassification levels are the same as the initial identification levels specified by the CDE.

## Teacher Evaluation

- Use student's academic performance.
- Note that incurred deficits in motivation and academic success unrelated to English-language proficiency do not preclude a student from reclassification.

## Parent Opinion and Consultation

- Provide notice to parents or guardians of their right and encourage them to participate in the reclassification process.
- Provide an opportunity for a face-to-face meeting with parents or guardians.

# Comparison of Performance in Basic Skills

## ■ Definitions:

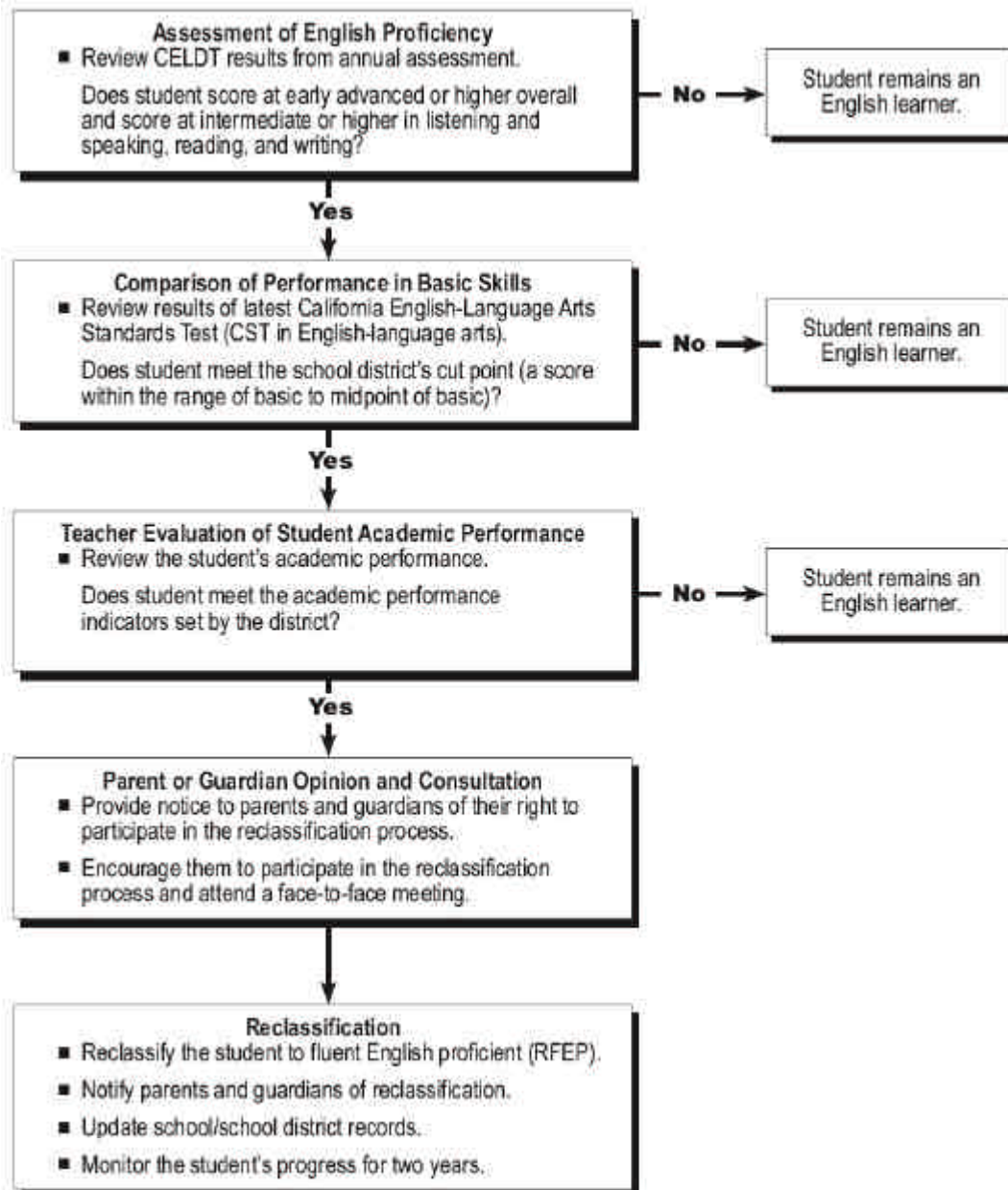
1. **“Performance in basic skills”** means the score and/or performance level resulting from a recent administration of the California English-Language Arts Standards Test (CST in English-language arts).
2. **“Range of performance in basic skills”** means a range of scores on the CST in English-language arts corresponding to a performance level or a range within a performance level.
3. **“Pupils of the same age”** refers to pupils who are enrolled in the same grade as the student who is being considered for reclassification.

## ■ Basic skills criteria:

1. A pupil’s score on the CST in English-language arts in the range from the beginning of basic level up to the midpoint of the basic level suggests that the pupil may be sufficiently prepared to participate effectively in the curriculum and should be considered for reclassification. School districts may select a cut point in this range.
2. Pupils with scores above the cut point selected by the school district should be considered for reclassification.
3. For pupils scoring below the cut point, school districts should attempt to determine whether factors other than English-language proficiency are responsible for low performance on the CST in English-language arts and whether it is reasonable to reclassify the student.
4. For pupils in grade twelve, the eleventh grade CST in English-language arts results should be used, if available.
5. For pupils in grades one and two, school districts should base a decision to reclassify on CELDT results, teacher evaluation, parent consultation, and other locally available assessment results. Kindergarten students who have been identified as English learners probably should not be reclassified.
6. School districts must monitor pupil performance for two years after reclassification in accordance with existing California regulations and the federal No Child Left Behind (NCLB) legislation.

# Decision Guide: Reclassifying a Student from English Learner to Fluent English Proficient

School districts **are to** develop student reclassification policy and procedures based on the four criteria set forth in the reclassification guidelines approved by the State Board of Education (*Education Code* Section 313(d)). The chart below illustrates how the four criteria can be used by school districts/schools when evaluating a student's readiness for reclassification from English learner (EL) to fluent English proficient (RFEP).





Year: 2005-06



State: California

County: Santa Clara

County Code: 43

District: Los Altos Elementary

District Code: 69518

Schools:

-- List of Schools --

Assessment:

All Assessments

SubGroup:

All Students

Note: Subgroups vary by year.

Reports:

Test Results

All Assessments - All Students

Grades	K	1	2	3	4	5	6	7	8	9	10	11	12	Total Tested
<b>Overall Proficiency</b>														
<b>Number and Percent of Students at Each Overall Proficiency Level</b>														
<b>Advanced</b>	28	18	17	5	5	9	6	3	4	0	0	0	0	95
	19.0%	28.0%	30.0%	17.0%	18.0%	31.0%	30.0%	19.0%	57.0%	0.0%	0.0%	0.0%	0.0%	24.0%
<b>Early Advanced</b>	42	28	18	10	11	6	10	7	1	0	0	0	0	133
	29.0%	43.0%	32.0%	34.0%	39.0%	21.0%	50.0%	44.0%	14.0%	0.0%	0.0%	0.0%	0.0%	34.0%
<b>Intermediate</b>	52	11	11	8	6	5	2	2	2	0	0	0	0	99
	36.0%	17.0%	20.0%	28.0%	21.0%	17.0%	10.0%	13.0%	29.0%	0.0%	0.0%	0.0%	0.0%	25.0%
<b>Early Intermediate</b>	11	1	3	3	1	4	1	3	0	0	0	0	0	27
	8.0%	2.0%	5.0%	10.0%	4.0%	14.0%	5.0%	19.0%	0.0%	0.0%	0.0%	0.0%	0.0%	7.0%
<b>Beginning</b>	11	7	7	3	5	5	1	1	0	0	0	0	0	40
	8.0%	11.0%	13.0%	10.0%	18.0%	17.0%	5.0%	6.0%	0.0%	0.0%	0.0%	0.0%	0.0%	10.0%
<b>Number Tested</b>	<b>144</b>	<b>65</b>	<b>56</b>	<b>29</b>	<b>28</b>	<b>29</b>	<b>20</b>	<b>16</b>	<b>7</b>	<b>0</b>	<b>0</b>	<b>0</b>	<b>0</b>	<b>394</b>
	<b>100.0%</b>	<b>100.0%</b>	<b>100.0%</b>	<b>100.0%</b>	<b>100.0%</b>	<b>100.0%</b>	<b>100.0%</b>	<b>100.0%</b>	<b>100.0%</b>	<b>0.0%</b>	<b>0.0%</b>	<b>0.0%</b>	<b>0.0%</b>	<b>100.0%</b>
<b>Skill Area Mean Scale Scores</b>														
<b>Listening/Speaking</b>	500.7	522.2	554.3	529.9	522.5	511.2	552.0	542.1	581.3	0.0	0.0	0.0	0.0	
<b>Reading</b>			481.7	498.4	508.7	511.1	549.6	534.6	542.3	0.0	0.0	0.0	0.0	
<b>Writing</b>			490.6	523.0	508.7	518.3	552.4	524.1	534.9	0.0	0.0	0.0	0.0	

\*\*\* Summary data are not provided for groups of three or less.

[Printing tips](#)



Year: 2005-06



State: [California](#)  
 County: [Santa Clara](#) County Code: 43  
 District: Los Altos Elementary District Code: 69518

Schools: -- List of Schools --  
 Assessment: All Assessments  
 SubGroup: EL in ELD Program

Note: Subgroups vary by year.

Reports: Test Results

**All Assessments - EL in ELD Program**

Grades	K	1	2	3	4	5	6	7	8	9	10	11	12	Total Tested
<b>Overall Proficiency</b>														
<b>Number and Percent of Students at Each Overall Proficiency Level</b>														
<b>Advanced</b>	1	8	7	0	3	3	3	1	3	0	0	0	0	29
	17.0%	22.0%	21.0%	0.0%	18.0%	21.0%	43.0%	17.0%	75.0%	0.0%	0.0%	0.0%	0.0%	21.0%
<b>Early Advanced</b>	1	19	13	8	6	5	3	2	1	0	0	0	0	58
	17.0%	51.0%	39.0%	47.0%	35.0%	36.0%	43.0%	33.0%	25.0%	0.0%	0.0%	0.0%	0.0%	41.0%
<b>Intermediate</b>	3	8	9	5	5	3	1	1	0	0	0	0	0	35
	50.0%	22.0%	27.0%	29.0%	29.0%	21.0%	14.0%	17.0%	0.0%	0.0%	0.0%	0.0%	0.0%	25.0%
<b>Early Intermediate</b>	0	1	3	2	1	1	0	2	0	0	0	0	0	10
	0.0%	3.0%	9.0%	12.0%	6.0%	7.0%	0.0%	33.0%	0.0%	0.0%	0.0%	0.0%	0.0%	7.0%
<b>Beginning</b>	1	1	1	2	2	2	0	0	0	0	0	0	0	9
	17.0%	3.0%	3.0%	12.0%	12.0%	14.0%	0.0%	0.0%	0.0%	0.0%	0.0%	0.0%	0.0%	6.0%
<b>Number Tested</b>	<b>6</b>	<b>37</b>	<b>33</b>	<b>17</b>	<b>17</b>	<b>14</b>	<b>7</b>	<b>6</b>	<b>4</b>	<b>0</b>	<b>0</b>	<b>0</b>	<b>0</b>	<b>141</b>
	100.0%	100.0%	100.0%	100.0%	100.0%	100.0%	100.0%	100.0%	100.0%	0.0%	0.0%	0.0%	0.0%	100.0%
<b>Skill Area Mean Scale Scores</b>														
<b>Listening/Speaking</b>	457.0	535.6	564.2	516.7	534.1	497.6	571.3	525.5	613.5	0.0	0.0	0.0	0.0	
<b>Reading</b>			485.9	483.7	518.4	519.0	558.6	520.5	555.3	0.0	0.0	0.0	0.0	
<b>Writing</b>			505.6	513.8	523.2	515.2	555.9	524.5	534.8	0.0	0.0	0.0	0.0	

\*\*\* Summary data are not provided for groups of three or less.

[Printing tips](#)





Year: 2005-06



State: [California](#)

County: [Santa Clara](#)

County Code: 43

District: Los Altos Elementary District Code: 69518

Schools:

-- List of Schools --

Assessment:

All Assessments

SubGroup:

EL in ELD and SDAIE

Note: Subgroups vary by year.

Reports:

Test Results

**All Assessments - EL in ELD and SDAIE**

Grades	K	1	2	3	4	5	6	7	8	9	10	11	12	Total Tested
<b>Overall Proficiency</b>														
<b>Number and Percent of Students at Each Overall Proficiency Level</b>														
<b>Advanced</b>	0	0	0	0	0	*****	1	0	*****	0	0	0	0	2
	0.0%	0.0%	0.0%	0.0%	0.0%	***	20.0%	0.0%	***	0.0%	0.0%	0.0%	0.0%	14.0%
<b>Early Advanced</b>	0	0	0	0	0	*****	2	3	*****	0	0	0	0	5
	0.0%	0.0%	0.0%	0.0%	0.0%	***	40.0%	50.0%	***	0.0%	0.0%	0.0%	0.0%	36.0%
<b>Intermediate</b>	0	0	0	0	0	*****	1	1	*****	0	0	0	0	4
	0.0%	0.0%	0.0%	0.0%	0.0%	***	20.0%	17.0%	***	0.0%	0.0%	0.0%	0.0%	29.0%
<b>Early Intermediate</b>	0	0	0	0	0	*****	0	1	*****	0	0	0	0	1
	0.0%	0.0%	0.0%	0.0%	0.0%	***	0.0%	17.0%	***	0.0%	0.0%	0.0%	0.0%	7.0%
<b>Beginning</b>	0	0	0	0	0	*****	1	1	*****	0	0	0	0	2
	0.0%	0.0%	0.0%	0.0%	0.0%	***	20.0%	17.0%	***	0.0%	0.0%	0.0%	0.0%	14.0%
<b>Number Tested</b>	<b>0</b>	<b>0</b>	<b>0</b>	<b>0</b>	<b>0</b>	<b>2</b>	<b>5</b>	<b>6</b>	<b>1</b>	<b>0</b>	<b>0</b>	<b>0</b>	<b>0</b>	<b>14</b>
	<b>0.0%</b>	<b>0.0%</b>	<b>0.0%</b>	<b>0.0%</b>	<b>0.0%</b>	<b>100.0%</b>	<b>100.0%</b>	<b>100.0%</b>	<b>100.0%</b>	<b>0.0%</b>	<b>0.0%</b>	<b>0.0%</b>	<b>0.0%</b>	<b>100.0%</b>
<b>Skill Area Mean Scale Scores</b>														
<b>Listening/Speaking</b>	0.0	0.0	0.0	0.0	0.0	*****	514.2	521.2	*****	0.0	0.0	0.0	0.0	
<b>Reading</b>			0.0	0.0	0.0	*****	508.4	521.7	*****	0.0	0.0	0.0	0.0	
<b>Writing</b>			0.0	0.0	0.0	*****	531.6	504.5	*****	0.0	0.0	0.0	0.0	

\*\*\* Summary data are not provided for groups of three or less.

[Printing tips](#)



Year: 2005-06



State: [California](#)  
 County: [Santa Clara](#) County Code: 43  
 District: Los Altos Elementary District Code: 69518

Schools: -- List of Schools --  
 Assessment: Initial Assessment  
 SubGroup: All Students

Note: Subgroups vary by year.

Reports: Test Results

Initial Assessment - All Students

Grades	K	1	2	3	4	5	6	7	8	9	10	11	12	Total Tested
<b>Overall Proficiency</b>														
<b>Number and Percent of Students at Each Overall Proficiency Level</b>														
<b>Advanced</b>	27	10	5	5	0	5	2	2	*****	0	0	0	0	56
	19.0%	48.0%	31.0%	56.0%	0.0%	38.0%	29.0%	33.0%	***	0.0%	0.0%	0.0%	0.0%	26.0%
<b>Early Advanced</b>	41	4	3	2	2	1	4	1	*****	0	0	0	0	58
	29.0%	19.0%	19.0%	22.0%	33.0%	8.0%	57.0%	17.0%	***	0.0%	0.0%	0.0%	0.0%	26.0%
<b>Intermediate</b>	50	1	2	1	0	0	0	1	*****	0	0	0	0	56
	36.0%	5.0%	13.0%	11.0%	0.0%	0.0%	0.0%	17.0%	***	0.0%	0.0%	0.0%	0.0%	26.0%
<b>Early Intermediate</b>	11	0	0	0	0	3	1	1	*****	0	0	0	0	16
	8.0%	0.0%	0.0%	0.0%	0.0%	23.0%	14.0%	17.0%	***	0.0%	0.0%	0.0%	0.0%	7.0%
<b>Beginning</b>	11	6	6	1	4	4	0	1	*****	0	0	0	0	33
	8.0%	29.0%	38.0%	11.0%	67.0%	31.0%	0.0%	17.0%	***	0.0%	0.0%	0.0%	0.0%	15.0%
<b>Number Tested</b>	<b>140</b>	<b>21</b>	<b>16</b>	<b>9</b>	<b>6</b>	<b>13</b>	<b>7</b>	<b>6</b>	<b>1</b>	<b>0</b>	<b>0</b>	<b>0</b>	<b>0</b>	<b>219</b>
	100.0%	100.0%	100.0%	100.0%	100.0%	100.0%	100.0%	100.0%	100.0%	0.0%	0.0%	0.0%	0.0%	100.0%
<b>Skill Area Mean Scale Scores</b>														
<b>Listening/Speaking</b>	500.3	495.6	497.6	562.7	424.5	473.5	561.7	540.2	*****	0.0	0.0	0.0	0.0	
<b>Reading</b>			457.6	529.7	412.7	480.6	564.7	550.0	*****	0.0	0.0	0.0	0.0	
<b>Writing</b>			429.6	539.6	399.8	477.0	558.6	520.0	*****	0.0	0.0	0.0	0.0	

\*\*\* Summary data are not provided for groups of three or less.

[Printing tips](#)



Year: 2005-06



State: [California](#)

County: [Santa Clara](#)

County Code: 43

District: Los Altos Elementary

District Code: 69518

Schools:

-- List of Schools --

Assessment:

Initial Assessment

SubGroup:

All Students

Note: Subgroups vary by year.

Reports:

English Proficiency

English Proficiency Report - All Students

Grades	K	1	2	3	4	5	6	7	8	9	10	11	12	Total Tested
<b>Students Meeting State Board of Education Criterion for English Proficiency</b>														
<b># Students</b>	68	14	7	7	2	6	6	3	*****	0	0	0	0	113
<b>% Students</b>	49%	67%	44%	78%	33%	46%	86%	50%	****%	0%	0%	0%	0%	52%
<b>Number tested</b>	140	21	16	9	6	13	7	6	1	0	0	0	0	219

\*\*\* Summary data are not provided for groups of three or less.

[Printing tips](#)



Year: 2005-06



State: [California](#)

County: [Santa Clara](#)

County Code: 43

District: Los Altos Elementary

District Code: 69518

Schools:

-- List of Schools --

Assessment:

Initial Assessment

SubGroup:

EL in ELD Program

Note: Subgroups vary by year.

Reports:

English Proficiency

**English Proficiency Report - EL in ELD Program**

Grades	K	1	2	3	4	5	6	7	8	9	10	11	12	Total Tested
<b>Students Meeting State Board of Education Criterion for English Proficiency</b>														
# Students	*****	0	*****	0	*****	*****	0	*****	0	0	0	0	0	1
% Students	***%	0%	***%	0%	***%	***%	0%	***%	0%	0%	0%	0%	0%	13%
Number tested	2	0	1	0	1	3	0	1	0	0	0	0	0	8

\*\*\* Summary data are not provided for groups of three or less.

[Printing tips](#)



Year: 2005-06



State: [California](#)

County: [Santa Clara](#)

County Code: 43

District: Los Altos Elementary

District Code: 69518

Schools:

-- List of Schools --

Assessment:

Annual Assessment

SubGroup:

Primary Language-Spanish

Note: Subgroups vary by year.

Reports:

English Proficiency

**English Proficiency Report - Primary Language-Spanish**

Grades	K	1	2	3	4	5	6	7	8	9	10	11	12	Total Tested
<b>Students Meeting State Board of Education Criterion for English Proficiency</b>														
<b># Students</b>	*****	6	7	0	3	2	1	5	4	0	0	0	0	28
<b>% Students</b>	***%	86%	50%	0%	60%	33%	25%	100%	80%	0%	0%	0%	0%	52%
<b>Number tested</b>	1	7	14	7	5	6	4	5	5	0	0	0	0	54

\*\*\* Summary data are not provided for groups of three or less.

[Reclassification Guidelines](#)

[Printing tips](#)



Year: 2005-06



State: [California](#)

County: [Santa Clara](#)

County Code: 43

District: Los Altos Elementary District Code: 69518

Schools:

-- List of Schools --

Assessment:

Annual Assessment

SubGroup:

Primary Language-Mandarin (Putonghua)

Note: Subgroups vary by year.

Reports:

English Proficiency

English Proficiency Report - Primary Language-Mandarin (Putonghua)

Grades	K	1	2	3	4	5	6	7	8	9	10	11	12	Total Tested
<b>Students Meeting State Board of Education Criterion for English Proficiency</b>														
# Students	*****	10	4	*****	3	*****	*****	*****	0	0	0	0	0	22
% Students	****%	77%	100%	***%	60%	***%	***%	***%	0%	0%	0%	0%	0%	76%
Number tested	2	13	4	2	5	1	1	1	0	0	0	0	0	29

\*\*\* Summary data are not provided for groups of three or less.

[Reclassification Guidelines](#)  
[Printing tips](#)



Year: 2005-06



State: [California](#)

County: [Santa Clara](#)

County Code: 43

District: [Los Altos Elementary](#)

District Code: 69518

School: Santa Rita Elem.

School Code: 6047492

Assessment: All Assessments

SubGroup: Primary Language-Spanish

Note: Subgroups vary by year.

Reports: English Proficiency

**English Proficiency Report - Primary Language-Spanish**

Grades	K	1	2	3	4	5	6	7	8	9	10	11	12	Total Tested
<b>Students Meeting State Board of Education Criterion for English Proficiency</b>														
# Students	1	*****	3	*****	2	*****	*****	0	0	0	0	0	0	9
% Students	13%	***%	43%	***%	50%	***%	***%	0%	0%	0%	0%	0%	0%	29%
Number tested	8	3	7	3	4	3	3	0	0	0	0	0	0	31

\*\*\* Summary data are not provided for groups of three or less.

[Reclassification Guidelines](#)

[Printing tips](#)



Year: 2005-06



State: [California](#)

County: [Santa Clara](#) County Code: 43

District: [Los Altos Elementary](#) District Code: 69518

School: Almond Elementary School Code: 6047377

Assessment: Annual Assessment

SubGroup: Primary Language-Spanish

Note: Subgroups vary by year.

Reports: English Proficiency

**English Proficiency Report - Primary Language-Spanish**

Grades	K	1	2	3	4	5	6	7	8	9	10	11	12	Total Tested
<b>Students Meeting State Board of Education Criterion for English Proficiency</b>														
# Students	0	*****	*****	*****	0	*****	*****	0	0	0	0	0	0	4
% Students	0%	***%	***%	***%	0%	***%	***%	0%	0%	0%	0%	0%	0%	40%
Number tested	0	2	3	3	0	1	1	0	0	0	0	0	0	10

\*\*\* Summary data are not provided for groups of three or less.

[Reclassification Guidelines](#)

[Printing tips](#)



California Department of Education  
 Educational Demographics Unit  
 Prepared: 5/15/2007 11:54:08 AM

Report:

Year:

District:

[EL/FEP definition](#)

Rank/Language Name	Kdgn.	Grade 1	Grade 2	Grade 3	Grade 4	Grade 5	Grade 6	Grade 7	Grade 8			Grade 10		Grade 11		Grade 12		Ungr.	Total	% of Total
									8	9	10	10	11	12	12					
1 Spanish	13	8	11	7	4	7	5	6	9	0	0	0	0	0	0	0	0	70	27.5	
2 Mandarin (Putonghua)	19	13	4	1	2	0	0	3	1	0	0	0	0	0	0	0	0	43	16.9	
3 Japanese	6	7	7	1	5	1	1	1	1	0	0	0	0	0	0	0	0	30	11.8	
4 Russian	10	3	3	3	3	2	0	0	1	0	0	0	0	0	0	0	0	25	9.8	
5 All other non-English la	3	5	3	1	0	3	1	0	1	0	0	0	0	0	0	0	0	17	6.7	
6 Korean	5	2	3	2	1	0	0	0	0	0	0	0	0	0	0	0	0	13	5.1	
7 Cantonese	2	0	3	1	2	1	1	1	0	0	0	0	0	0	0	0	0	11	4.3	
8 Farsi (Persian)	3	1	0	1	0	1	1	0	1	0	0	0	0	0	0	0	0	8	3.1	
9 Hebrew	0	2	1	1	0	2	0	0	0	0	0	0	0	0	0	0	0	6	2.4	
10 Filipino (Pilipino or Tag	1	1	1	0	0	0	1	1	0	0	0	0	0	0	0	0	0	5	2.0	
11 French	0	0	2	1	0	1	0	1	0	0	0	0	0	0	0	0	0	5	2.0	
12 Dutch	0	1	0	0	1	0	2	0	0	0	0	0	0	0	0	0	0	4	1.6	
13 Hindi	2	0	1	0	0	0	0	0	0	0	0	0	0	0	0	0	0	3	1.2	
14 German	1	1	0	0	1	0	0	0	0	0	0	0	0	0	0	0	0	3	1.2	
15 Portuguese	2	0	0	0	0	0	0	0	0	0	0	0	0	0	0	0	0	2	0.8	
16 Punjabi	0	2	0	0	0	0	0	0	0	0	0	0	0	0	0	0	0	2	0.8	
17 Tongan	0	1	0	0	0	0	0	1	0	0	0	0	0	0	0	0	0	2	0.8	
18 Urdu	0	0	1	1	0	0	0	0	0	0	0	0	0	0	0	0	0	2	0.8	
19 Vietnamese	1	0	0	0	0	0	0	0	0	0	0	0	0	0	0	0	0	1	0.4	
20 Italian	0	0	0	0	0	0	0	0	1	0	0	0	0	0	0	0	0	1	0.4	
21 Bengali	1	0	0	0	0	0	0	0	0	0	0	0	0	0	0	0	0	1	0.4	
22 Gujarati	0	1	0	0	0	0	0	0	0	0	0	0	0	0	0	0	0	1	0.4	
23 Ilocano	0	0	0	0	0	0	0	0	0	0	0	0	0	0	0	0	0	0	0.0	
24 Indonesian	0	0	0	0	0	0	0	0	0	0	0	0	0	0	0	0	0	0	0.0	
25 Greek	0	0	0	0	0	0	0	0	0	0	0	0	0	0	0	0	0	0	0.0	
26 Albanian	0	0	0	0	0	0	0	0	0	0	0	0	0	0	0	0	0	0	0.0	
27 Arabic	0	0	0	0	0	0	0	0	0	0	0	0	0	0	0	0	0	0	0.0	
28 Assyrian	0	0	0	0	0	0	0	0	0	0	0	0	0	0	0	0	0	0	0.0	
29 Taiwanese	0	0	0	0	0	0	0	0	0	0	0	0	0	0	0	0	0	0	0.0	
30 Thai	0	0	0	0	0	0	0	0	0	0	0	0	0	0	0	0	0	0	0.0	
31 Rumanian	0	0	0	0	0	0	0	0	0	0	0	0	0	0	0	0	0	0	0.0	
32 Serbo-Croatian (Bosnian,	0	0	0	0	0	0	0	0	0	0	0	0	0	0	0	0	0	0	0.0	
33 Polish	0	0	0	0	0	0	0	0	0	0	0	0	0	0	0	0	0	0	0.0	
EL Totals	69	48	40	20	19	18	12	14	15	0	0	0	0	0	0	0	0	255	100.0	
% of Total	27.1	18.8	15.7	7.8	7.5	7.1	4.7	5.5	5.9	0.0	0.0	0.0	0.0	0.0	0.0	0.0	0.0	100.0		
<a href="#">County EL Totals</a>	9,124	8,470	7,560	6,314	5,454	4,620	4,192	4,023	3,570	4,160	2,842	2,554	2,143	84	65,110					
% of County Total	14.0	13.0	11.6	9.7	8.4	7.1	6.4	6.2	5.5	6.4	4.4	3.9	3.3	0.1	100.0					
<a href="#">State EL Totals</a>	179,622	174,081	166,015	159,172	147,241	123,164	112,156	100,599	90,520	103,390	81,956	63,648	49,453	19,407	1,570,424					
% of State Total	11.4	11.1	10.6	10.1	9.4	7.8	7.1	6.4	5.8	6.6	5.2	4.1	3.1	1.2	100.0					

Click on "County EL Totals" or "State EL Totals" to generate a report at that level.

California Department of Education  
 Educational Demographics Unit  
 Prepared: 5/15/2007 11:55:48 AM

Report: Number of Fluent-English-Proficient (FEP) by Language  
 Year: 2005-06  
 District: 4369518--LOS ALTOS ELEMENTARY

[EL/FEP definition](#)

Rank/Language Name	Kdgn.	Grade 1	Grade 2	Grade 3	Grade 4	Grade 5	Grade 6	Grade 7	Grade 8	Grade 9	Grade 10	Grade 11	Grade 12	Ungr.	Total	% of Total
1 Mandarin (Putonghua)	27	24	20	25	29	38	30	27	28	0	0	0	0	0	248	30.5
2 Cantonese	8	4	8	10	4	9	4	11	6	0	0	0	0	0	64	7.9
3 Farsi (Persian)	8	5	5	7	6	8	7	8	8	0	0	0	0	0	62	7.6
4 All other non-English la	7	6	4	5	11	7	7	4	4	0	0	0	0	0	55	6.8
5 Spanish	8	4	13	4	3	4	6	5	6	0	0	0	0	0	53	6.5
6 Russian	4	1	3	7	2	8	9	10	3	0	0	0	0	0	47	5.8
7 French	1	4	2	4	4	11	2	5	9	0	0	0	0	0	42	5.2
8 Japanese	5	1	6	6	3	5	7	2	5	0	0	0	0	0	40	4.9
9 Korean	0	3	5	8	0	5	5	1	5	0	0	0	0	0	32	3.9
10 Hebrew	1	2	4	2	0	6	3	6	2	0	0	0	0	0	26	3.2
11 German	0	4	2	2	6	3	0	4	2	0	0	0	0	0	23	2.8
12 Vietnamese	2	1	3	2	2	4	4	1	2	0	0	0	0	0	21	2.6
13 Hindi	2	2	2	0	5	0	5	0	1	0	0	0	0	0	17	2.1
14 Arabic	1	0	1	0	2	1	3	1	2	0	0	0	0	0	11	1.4
15 Urdu	0	0	0	1	0	2	1	3	3	0	0	0	0	0	10	1.2
16 Dutch	1	1	1	2	0	1	1	0	2	0	0	0	0	0	9	1.1
17 Gujarati	2	0	0	1	1	0	0	1	3	0	0	0	0	0	8	1.0
18 Serbo-Croatian (Bosnian,	1	0	1	1	1	0	1	2	0	0	0	0	0	0	7	0.9
19 Filipino (Pilipino or Tag	1	0	0	1	0	1	0	2	1	0	0	0	0	0	6	0.7
20 Punjabi	1	0	1	0	2	0	0	0	1	0	0	0	0	0	5	0.6
21 Taiwanese	0	0	1	0	1	0	0	3	0	0	0	0	0	0	5	0.6
22 Portuguese	0	1	1	0	0	1	0	0	0	0	0	0	0	0	3	0.4
23 Assyrian	0	0	0	1	0	1	1	0	0	0	0	0	0	0	3	0.4
24 Italian	0	0	0	0	0	2	0	0	1	0	0	0	0	0	3	0.4
25 Thai	0	0	0	1	0	0	1	0	0	0	0	0	0	0	2	0.2
26 Tongan	0	0	0	1	1	0	0	0	0	0	0	0	0	0	2	0.2
27 Rumanian	0	0	0	0	0	1	0	1	0	0	0	0	0	0	2	0.2
28 Polish	0	0	1	0	0	0	0	1	0	0	0	0	0	0	2	0.2
29 Greek	0	0	0	0	0	0	0	1	0	0	0	0	0	0	1	0.1
30 Ilocano	0	0	0	1	0	0	0	0	0	0	0	0	0	0	1	0.1
31 Indonesian	0	0	0	1	0	0	0	0	0	0	0	0	0	0	1	0.1
32 Bengali	0	1	0	0	0	0	0	0	0	0	0	0	0	0	1	0.1
33 Albanian	0	0	0	0	0	0	0	0	1	0	0	0	0	0	1	0.1
FEP Totals	80	64	84	93	83	118	97	99	95	0	0	0	0	0	813	100.0
% of Total	9.8	7.9	10.3	11.4	10.2	14.5	11.9	12.2	11.7	0.0	0.0	0.0	0.0	0.0	100.0	
<a href="#">County FEP Totals</a>	1,725	1,876	2,347	3,735	4,341	5,160	5,410	5,483	5,603	5,530	6,134	5,832	6,102	4	59,282	
% of County Total	2.9	3.2	4.0	6.3	7.3	8.7	9.1	9.2	9.5	9.3	10.3	9.8	10.3	0.0	100.0	
<a href="#">State FEP Totals</a>	27,412	37,548	44,381	55,116	68,837	94,929	106,872	115,167	120,588	124,240	119,439	107,112	100,987	1,326	1,123,954	
% of State Total	2.4	3.3	3.9	4.9	6.1	8.4	9.5	10.2	10.7	11.1	10.6	9.5	9.0	0.1	100.0	

Click on "County FEP Totals" or "State FEP Totals" to generate a report at that level.

California Department of Education  
 Educational Demographics Unit  
 Prepared: 5/15/2007 11:57:41 AM

Report

Year

District

[EL/FEP definition](#)

**Row A - Number of English Learner Students enrolled in specific instructional settings.**

	Structured English Immersion	Alternative Course of Study	English Language Mainstream Class - Students Meeting Criteria	English Language Mainstream Class - Parental Request	Other Instructional Settings	Total ELs
District Totals	153	0	99	0	3	255
County Totals	33,230	4,479	22,125	1,018	4,258	65,110
Statewide Totals	737,243	105,833	624,756	31,901	70,721	1,570,454

**Row B - Number of English Learner Students receiving instructional services.**

	ELs Receiving English Language Development (ELD) Services	ELs Receiving (ELD) and Specially Designed Academic Instruction in English (SDAIE)	ELs Receiving ELD and SDAIE with Primary Language (L1) Support	ELs Receiving ELD and Academic Subjects through the Primary Language (L1)	ELs Receiving Other EL Instructional Services	ELs not Receiving any EL Instructional Services	Total ELs
District Totals	148	6	0	0	90	11	255
County Totals	4,798	40,788	5,460	3,932	8,103	2,029	65,110
Statewide Totals	168,129	802,947	331,733	94,933	138,170	34,542	1,570,454

California Department of Education  
 Educational Demographics Unit  
 Prepared: 5/15/2007 11:58:29 AM

Report   
 Year   
 District

[EL/FEP definition](#)

**Row A - Number of English Learner Students enrolled in specific instructional settings.**

School	Code	Structured English Immersion	Alternative Course of Study	English Language Mainstream Class - Students Meeting Criteria	English Language Mainstream Class - Parental Request	Other Instructional Settings	Total ELs
Almond Elementary	6047377	29	0	16	0	0	45
Ardis G. Egan Inte	6047385	6	0	18	0	1	25
Bullis-Purissima	6047427	11	0	0	0	0	11
Covington Elementa	6047401	27	0	7	0	0	34
Georgina P. Blach	6047435	1	0	1	0	2	4
Loyola Elementary	6047450	12	0	13	0	0	25
Oak Avenue Element	6047468	6	0	4	0	0	10
Santa Rita Element	6047492	53	0	28	0	0	81
Springer Elementar	6047500	8	0	12	0	0	20
District Totals		153	0	99	0	3	255
County Totals		33,230	4,479	22,125	1,018	4,258	65,110
Statewide Totals		737,243	105,833	624,756	31,901	70,721	1,570,454

**Row B- Number of English Learner Students receiving instructional services.**

School	Code	ELs Receiving English Language Development (ELD) Services	ELs Receiving (ELD) and Specially Designed Academic Instruction in English (SDAIE)	ELs Receiving ELD and SDAIE with Primary Language (L1) Support	ELs Receiving ELD and Academic Subjects through the Primary Language (L1)	ELs Receiving Other EL Instructional Services	ELs not Receiving any EL Instructional Services	Total ELs
Almond Elementary	6047377	41	0	0	0	1	3	45
Ardis G. Egan Inte	6047385	5	6	0	0	9	5	25
Bullis-Purissima	6047427	3	0	0	0	8	0	11
Covington Elementa	6047401	23	0	0	0	11	0	34
Georgina P. Blach	6047435	0	0	0	0	1	3	4
Loyola Elementary	6047450	12	0	0	0	13	0	25
Oak Avenue Element	6047468	7	0	0	0	3	0	10
Santa Rita Element	6047492	40	0	0	0	41	0	81
Springer Elementar	6047500	17	0	0	0	3	0	20
District Totals		148	6	0	0	90	11	255
County Totals		4,798	40,788	5,460	3,932	8,103	2,029	65,110
Statewide Totals		168,129	802,947	331,733	94,933	138,170	34,542	1,570,454

California Department of Education  
 Educational Demographics Unit  
 Prepared: 5/15/2007 11:59:17 AM

-Select another year-

Selected District Level Data - 4369518--LOS ALTOS ELEMENTARY  
 for the year 2005-06

District	Enrollment	English Learners	Fluent-English-Proficient Students	Students Redesignated FEP
4369518--LOS ALTOS ELEMENTARY	4,036	255 ( 6.3 %)	813 ( 20.1 %)	40 ( 19.3 %)
<a href="#">County Total:</a>	254,622	65,110 ( 25.6 %)	59,282 ( 23.3 %)	6,963 ( 10.8 %)
<a href="#">State Totals:</a>	6,312,436	1,570,424 (24.9%)	1,123,954 (17.8%)	152,911 (9.6%)

California Department of Education  
 Educational Demographics Unit  
 Prepared: 5/15/2007 11:59:51 AM

Report  
 District

Time Series - Redesignation 1996-2005  
 4369518-LOS ALTOS ELEMENTARY

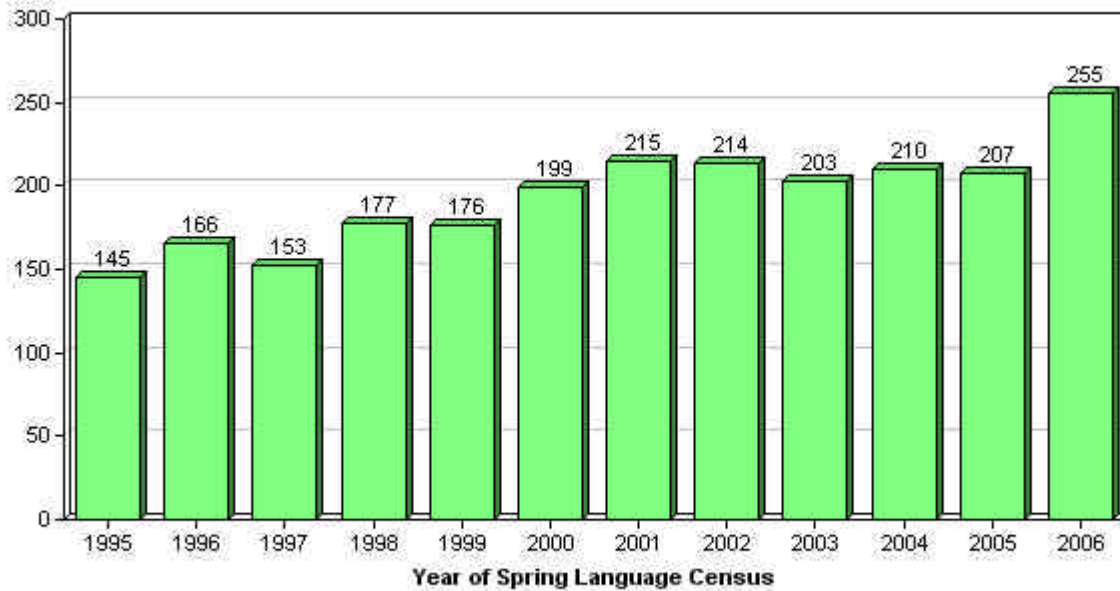
**ELs Redesignated to FEP**

	<b>2005</b>	<b>2004</b>	<b>2003</b>	<b>2002</b>	<b>2001</b>	<b>2000</b>	<b>1999</b>	<b>1998</b>	<b>1997</b>	<b>1996</b>
District Total:	58 ( 27.6 %)	45 ( 22.2 %)	53 ( 24.8 %)	43 ( 20.0 %)	45 ( 22.6 %)	22 ( 12.5 %)	53 ( 29.9 %)	26 ( 17.0 %)	41 ( 24.7 %)	30 ( 20.0 %)
County Total:	6,499 ( 10.3 %)	6,173 ( 10.0 %)	5,553 ( 9.3 %)	4,537 ( 7.8 %)	5,839 ( 10.0 %)	5,002 ( 8.9 %)	5,491 ( 9.8 %)	5,608 ( 10.0 %)	5,597 ( 10.4 %)	4,088 ( 8.3 %)
State Total:	143,136 ( 9.0 %)	133,214 ( 8.3 %)	120,122 ( 7.7 %)	117,450 ( 7.8 %)	133,964 ( 9.0 %)	112,214 ( 7.8 %)	106,288 ( 7.6 %)	96,545 ( 7.0 %)	89,144 ( 6.7 %)	81,733 ( 6.3 %)

California Department of Education  
Educational Demographics Unit  
Prepared: 5/15/2007 12:01:13 PM

Report Time Series - Number of English Learners

Number of English Learners for Los Altos Elementary





## Glossary

### Teachers Who Provide Services to English Learners

---

#### Teachers Providing Primary Language Instruction to EL Students:

These teachers provide English Language Development (ELD) and teach at least two academic subjects that are required for grade promotion and graduation, and teach English learner (EL) students primarily through the primary language (L1). English Language Development (ELD) instruction is designed to promote efficient acquisition of skills needed to communicate effectively in English.

#### Teachers Providing SDAIE & ELD:

Teachers who provide English Language Development and teach at least two academic subjects required for grade promotion and graduation. These courses are taught to English learners through Specially Designed Academic Instruction in English (SDAIE). SDAIE is used to teach academic courses in English to English learners and is designed to increase the level of understanding of the English instruction.

#### Teachers Providing SDAIE Only:

Teachers who teach at least two academic subjects required for grade promotion and graduation, taught to English learners through Specially Designed Academic Instruction in English (SDAIE). SDAIE is an approach used to teach academic courses in English to English learners and is designed to increase the level of understanding of the English instruction.

#### Teachers Providing ELD Only:

Teachers who provide English Language Development which is English language instruction appropriate for the English Learner's level of language proficiency. It is designed to promote efficient acquisition of skills needed to communicate effectively in English.

#### Total Number of Teachers Providing SDAIE, ELD, or Primary Language Instruction to EL Students:

The sum of the teachers who provide English Learner (EL) students services in English Language Development (ELD) or teach at least two academic subjects that are required for grade promotion and graduation, taught either through primary language (L1) or through Specially Designed Academic Instruction in English (SDAIE). ELD is English language instruction appropriate for the English Learner's level of language proficiency. It is designed to promote efficient acquisition of skills needed to communicate effectively in English. SDAIE is an approach used to teach academic courses in English to EL students and is designed to increase the level of comprehensibility of English instruction.

*\* As reported on the annual Language Census data collection conducted by the Educational Demographics Office.*



California Department of Education  
 Educational Demographics Unit  
 Source: Language Census  
 Data Collection Form: R30-LC  
 Prepared: 5/15/2007 12:01:50 PM

Report

Year

District

[Glossary](#)

District	District Code	Teachers providing primary language instruction to EL students	Teachers providing SDAIE & ELD	Teachers providing SDAIE only	Teachers providing ELD only	Total teachers providing SDAIE, ELD, or primary language instruction to EL students
DISTRICT TOTAL		0	2	74	0	76
COUNTY TOTAL		271	5,088	1,962	568	7,889
STATE TOTAL		6,767	125,632	33,460	15,147	181,006

California Department of Education  
 Educational Demographics Unit  
 Source: Language Census  
 Data Collection Form: R30-LC  
 Prepared: 5/15/2007 12:03:14 PM

Report

Year

District

[Glossary](#)

School	CDS Code	Teachers providing primary language instruction to EL students	Teachers providing SDAIE & ELD	Teachers providing SDAIE only	Teachers providing ELD only	Total teachers providing SDAIE, ELD, or primary language instruction to EL students
<u>ALMOND ELEMENTARY</u>	43695186047377	0	0	16	0	16
<u>ARDIS G. EGAN INTERMEDIATE</u>	43695186047385	0	1	0	0	1
<u>BULLIS-PURISSIMA</u>	43695186047427	0	0	2	0	2
<u>COVINGTON ELEMENTARY</u>	43695186047401	0	0	14	0	14
<u>GEORGINA P. BLACH INTERMEDIATE</u>	43695186047435	0	0	0	0	0
<u>LOS ALTOS ELEMENTARY</u>	43695180000000	0	0	0	0	0
<u>LOYOLA ELEMENTARY</u>	43695186047450	0	0	8	0	8
<u>OAK AVENUE ELEMENTARY</u>	43695186047468	0	0	5	0	5
<u>SANTA RITA ELEMENTARY</u>	43695186047492	0	1	19	0	20
<u>SPRINGER ELEMENTARY</u>	43695186047500	0	0	10	0	10
DISTRICT TOTAL		0	2	74	0	76
COUNTY TOTAL		271	5,088	1,962	568	7,889
STATE TOTAL		6,767	125,632	33,460	15,147	181,006

California Department of Education  
 Educational Demographics Unit  
 Prepared: 5/15/2007 12:04:03 PM

Report

Year

District

[Bilingual Paraprofessionals definition](#)

District	District Code	Languages	Total number of bilingual paraprofessionals (aides)
LOS ALTOS ELEMENTARY	4369518	Russian	1
	4369518	Spanish	2
DISTRICT TOTAL:		* All Languages *	3
COUNTY TOTAL:		<a href="#">* All languages *</a>	234
STATE TOTAL:		<a href="#">* All languages *</a>	15,563

California Department of Education  
 Educational Demographics Unit  
 Prepared: 5/15/2007 12:04:39 PM

Report

Year

District

[Bilingual Paraprofessionals definition](#) Click on \* All Languages \* to generate a report broken down by language.

School	School Code	Languages	Total number of bilingual paraprofessionals (aides)
ARDIS G. EGAN INTERMEDIATE	43695186047385	<a href="#">* All languages *</a>	1
SANTA RITA ELEMENTARY	43695186047492	<a href="#">* All languages *</a>	2
DISTRICT TOTAL:		<a href="#">* All languages *</a>	3
COUNTY TOTAL:		<a href="#">* All languages *</a>	234
STATE TOTAL:		<a href="#">* All languages *</a>	15,563

2006-07 Accountability Progress Reporting (APR)



**Local Educational Agency (LEA) Report - Base API**  
2006 Base Academic Performance Index (API) Report

California Department of Education  
Policy and Evaluation Division  
4/10/2007

LEA: Los Altos Elementary  
LEA Type: Elementary  
County: Santa Clara  
CD Code: 43-69518

2006 Base API Links:

<a href="#">LEA Demographic Characteristics</a>
<a href="#">LEA Content Area Weights</a>
<a href="#">LEA List of Schools</a>
<a href="#">County List of Schools</a>

(An LEA is a school district or county office of education.)

2006-07 APR		2006-07 State API				2007 Federal AYP and PI		
Summary	Glossary	2006	Guide	2007	Guide	AYP	PI	Guide
		Base		Growth	These reports will be available August 31, 2007			

State Accountability: Academic Performance Index (API)

Number of Students Included in the 2006 API	3,098
2006 Base API	960

Subgroups

Ethnic/Racial	Number of Students Included in 2006 API	Numerically Significant	2006 Subgroup Base API
African American (not of Hispanic origin)	20	No	
American Indian or Alaska Native	2	No	
Asian	785	Yes	986
Filipino	23	No	
Hispanic or Latino	119	Yes	797
Pacific Islander	6	No	
White (not of Hispanic origin)	2,050	Yes	962
<b>Socioeconomically Disadvantaged</b>	68	No	
<b>English Learners</b>	242	Yes	864
<b>Students with Disabilities</b>	305	Yes	810

Click on the column header to view notes.

Note: Data are reported only for numerically significant subgroups. Subgroups meeting the following criteria are considered numerically significant: the group (1) contains at least 100 students with valid Standardized Testing and Reporting (STAR) Program test scores included in the API OR (2) comprises at least 15 percent of the total valid STAR Program scores and contains at least 50 students with valid STAR Program scores.

Student records from direct-funded charter schools are not included in the LEA report.

"N/A" means a number is not applicable or not available due to missing data.

" \* " means this API is calculated for a small LEA, defined as having between 11 and 99 valid STAR Program test scores included in the API. APIs based on small numbers of students are less reliable and therefore should be carefully interpreted.

LEAs do not have API growth targets.

Print Report

# California Standardized Testing and Reporting (STAR)

## Los Altos Elementary District Fluent-English Proficient and English Only

Total Enrollment on First Day of Testing: 3,174  
 Total Number Tested: 3,159  
 Total Number Tested in Selected Subgroup: 3,022

County Name: Santa Clara County  
 District Name: Los Altos Elementary District  
 School Name: ---  
 CDS Code: 43-69518-0000000

### California Standards Test Scores - 2006

#### Grades

	2	3	4	5	6	7	8	9	10	11	EOC
<b>Reported Enrollment</b>	495	412	430	455	425	491	466				
<b>CST English-Language Arts</b>											
Students Tested	456	391	411	433	411	471	443				
% of Enrollment	92.1 %	94.9 %	95.6 %	95.2 %	96.7 %	95.9 %	95.1 %				
Mean Scale Score	418.9	416.7	437.9	420.8	410.1	423.8	411.8				
% Advanced	63 %	62 %	80 %	74 %	67 %	71 %	71 %				
% Proficient	30 %	26 %	16 %	16 %	24 %	22 %	19 %				
% Basic	4 %	9 %	2 %	8 %	7 %	6 %	7 %				
% Below Basic	1 %	2 %	0 %	0 %	1 %	1 %	2 %				
% Far Below Basic	2 %	1 %	2 %	2 %	1 %	0 %	0 %				
<b>CST Mathematics</b>											
Students Tested	456	391	411	433	411	470					
% of Enrollment	92.1 %	94.9 %	95.6 %	95.2 %	96.7 %	95.7 %					
Mean Scale Score	465.5	480.8	450.8	478.5	439.8	433.0					
% Advanced	76 %	83 %	78 %	74 %	63 %	56 %					
% Proficient	19 %	13 %	18 %	18 %	28 %	33 %					
% Basic	4 %	3 %	3 %	4 %	7 %	8 %					
% Below Basic	1 %	1 %	0 %	3 %	1 %	2 %					
% Far Below Basic	0 %	0 %	1 %	2 %	1 %	0 %					
<b>CST General Mathematics (Grades 6 &amp; 7 Standards)</b>											
Students Tested							20				20
% of Enrollment							4.3 %				
Mean Scale Score							315.7				315.7
% Advanced							5 %				5 %
% Proficient							30 %				30 %
% Basic							20 %				20 %
% Below Basic							20 %				20 %
% Far Below Basic							25 %				25 %
<b>CST Algebra I</b>											
Students Tested							420				420
% of Enrollment							90.1 %				
Mean Scale Score							419.6				419.6
% Advanced							41 %				41 %
% Proficient							41 %				41 %
% Basic							14 %				14 %
% Below Basic							5 %				5 %
% Far Below Basic							0 %				0 %
<b>CST History - Social Science Grade 8 Cumulative</b>											
Students Tested							441				
% of Enrollment							94.6 %				
Mean Scale Score							409.4				

% Advanced		63 %
% Proficient		25 %
% Basic		9 %
% Below Basic		2 %
% Far Below Basic		1 %

**CST Science - Grade 5, Grade 8, and Grade 10 Life Science**

Students Tested	433	444
% of Enrollment	95.2 %	95.3 %
Mean Scale Score	407.6	436.9
% Advanced	48 %	70 %
% Proficient	39 %	21 %
% Basic	10 %	7 %
% Below Basic	1 %	2 %
% Far Below Basic	1 %	0 %

---

[Print Report](#)

California Department of Education

©2007 California Department of Education

Page generated 5/15/2007 12:08:24 PM

Print Report

# California Standardized Testing and Reporting (STAR)

## Los Altos Elementary District

### Initially-Fluent English Proficient (I-FEP)

Total Enrollment on First Day of Testing: 3,174  
 Total Number Tested: 3,159  
 Total Number Tested in Selected Subgroup: 467

County Name: Santa Clara County  
 District Name: Los Altos Elementary District  
 School Name: ----  
 CDS Code: 43-69518-0000000

## California Standards Test Scores - 2006

### Grades

	2	3	4	5	6	7	8	9	10	11	EOC
<b>Reported Enrollment</b>	495	412	430	455	425	491	466				
<b>CST English-Language Arts</b>											
Students Tested	68	66	62	74	65	68	64				
% of Enrollment	13.7 %	16.0 %	14.4 %	16.3 %	15.3 %	13.8 %	13.7 %				
Mean Scale Score	425.7	430.3	454.0	437.8	419.5	435.3	415.5				
% Advanced	74 %	71 %	87 %	84 %	71 %	75 %	77 %				
% Proficient	21 %	24 %	13 %	11 %	20 %	18 %	19 %				
% Basic	4 %	3 %	0 %	5 %	9 %	7 %	5 %				
% Below Basic	0 %	0 %	0 %	0 %	0 %	0 %	0 %				
% Far Below Basic	1 %	2 %	0 %	0 %	0 %	0 %	0 %				
<b>CST Mathematics</b>											
Students Tested	68	66	62	74	65	68					
% of Enrollment	13.7 %	16.0 %	14.4 %	16.3 %	15.3 %	13.8 %					
Mean Scale Score	475.3	491.2	474.7	504.5	468.9	459.9					
% Advanced	78 %	89 %	89 %	86 %	74 %	71 %					
% Proficient	19 %	9 %	10 %	11 %	20 %	22 %					
% Basic	1 %	2 %	2 %	1 %	6 %	6 %					
% Below Basic	1 %	0 %	0 %	1 %	0 %	1 %					
% Far Below Basic	0 %	0 %	0 %	0 %	0 %	0 %					
<b>CST Algebra I</b>											
Students Tested							64				64
% of Enrollment							13.7 %				
Mean Scale Score							449.9				449.9
% Advanced							53 %				53 %
% Proficient							36 %				36 %
% Basic							11 %				11 %
% Below Basic							0 %				0 %
% Far Below Basic							0 %				0 %
<b>CST History - Social Science Grade 8 Cumulative</b>											
Students Tested							64				
% of Enrollment							13.7 %				
Mean Scale Score							415.2				
% Advanced							63 %				
% Proficient							34 %				
% Basic							3 %				
% Below Basic							0 %				
% Far Below Basic							0 %				
<b>CST Science - Grade 5, Grade 8, and Grade 10 Life Science</b>											
Students Tested				74			64				
% of Enrollment				16.3 %			13.7 %				
Mean Scale Score				413.3			444.5				



% Advanced	55 %	72 %
% Proficient	35 %	23 %
% Basic	9 %	5 %
% Below Basic	0 %	0 %
% Far Below Basic	0 %	0 %

---

[Print Report](#)

California Department of Education

©2007 California Department of Education

Page generated 5/15/2007 12:09:45 PM

Print Report

# California Standardized Testing and Reporting (STAR)

## Los Altos Elementary District

### Redesignated-Fluent English Proficient (R-FEP)

Total Enrollment on First Day of Testing: 3,174  
 Total Number Tested: 3,159  
 Total Number Tested in Selected Subgroup: 197

County Name: Santa Clara County  
 District Name: Los Altos Elementary District  
 School Name: ---  
 CDS Code: 43-69518-0000000

### California Standards Test Scores - 2006

#### Grades

	2	3	4	5	6	7	8	9	10	11	EOC
<b>Reported Enrollment</b>	495	412	430	455	425	491	466				
<b>CST English-Language Arts</b>											
Students Tested	15	26	21	43	31	30	31				
% of Enrollment	3.0 %	6.3 %	4.9 %	9.5 %	7.3 %	6.1 %	6.7 %				
Mean Scale Score	417.5	418.3	417.8	425.4	401.8	419.3	397.1				
% Advanced	67 %	69 %	81 %	65 %	58 %	70 %	65 %				
% Proficient	33 %	23 %	14 %	21 %	26 %	27 %	16 %				
% Basic	0 %	8 %	5 %	14 %	13 %	3 %	16 %				
% Below Basic	0 %	0 %	0 %	0 %	0 %	0 %	3 %				
% Far Below Basic	0 %	0 %	0 %	0 %	3 %	0 %	0 %				
<b>CST Mathematics</b>											
Students Tested	15	26	21	43	31	30					
% of Enrollment	3.0 %	6.3 %	4.9 %	9.5 %	7.3 %	6.1 %					
Mean Scale Score	467.1	478.9	452.0	489.7	417.5	426.9					
% Advanced	73 %	88 %	76 %	77 %	52 %	57 %					
% Proficient	27 %	8 %	19 %	21 %	29 %	33 %					
% Basic	0 %	4 %	5 %	2 %	13 %	10 %					
% Below Basic	0 %	0 %	0 %	0 %	3 %	0 %					
% Far Below Basic	0 %	0 %	0 %	0 %	3 %	0 %					
<b>CST General Mathematics (Grades 6 &amp; 7 Standards)</b>											
Students Tested							1				1
% of Enrollment							0.2 %				
Mean Scale Score							*				*
% Advanced							*				*
% Proficient							*				*
% Basic							*				*
% Below Basic							*				*
% Far Below Basic							*				*
<b>CST Algebra I</b>											
Students Tested							30				30
% of Enrollment							6.4 %				
Mean Scale Score							435.4				435.4
% Advanced							50 %				50 %
% Proficient							23 %				23 %
% Basic							20 %				20 %
% Below Basic							7 %				7 %
% Far Below Basic							0 %				0 %
<b>CST History - Social Science Grade 8 Cumulative</b>											
Students Tested							31				
% of Enrollment							6.7 %				
Mean Scale Score							395.0				

% Advanced		52 %
% Proficient		32 %
% Basic		6 %
% Below Basic		3 %
% Far Below Basic		6 %

**CST Science - Grade 5, Grade 8, and Grade 10 Life Science**

Students Tested	43	31
% of Enrollment	9.5 %	6.7 %
Mean Scale Score	397.0	421.4
% Advanced	40 %	65 %
% Proficient	43 %	23 %
% Basic	14 %	6 %
% Below Basic	2 %	6 %
% Far Below Basic	0 %	0 %

[Print Report](#)

California Department of Education

©2007 California Department of Education

Page generated 5/15/2007 12:16:24 PM

Print Report

# California Standardized Testing and Reporting (STAR)

## Los Altos Elementary District

### English Learners Enrolled in CA Public Schools Less Than 12 Months

Total Enrollment on First Day of Testing: 3,174  
 Total Number Tested: 3,159  
 Total Number Tested in Selected Subgroup: 27

County Name: Santa Clara County  
 District Name: Los Altos Elementary District  
 School Name: ---  
 CDS Code: 43-69518-0000000

### California Standards Test Scores - 2006

#### Grades

	2	3	4	5	6	7	8	9	10	11	EOC
<b>Reported Enrollment</b>	495	412	430	455	425	491	466				
<b>CST English-Language Arts</b>											
Students Tested	7	2	3	6	3	4	1				
% of Enrollment	1.4 %	0.5 %	0.7 %	1.3 %	0.7 %	0.8 %	0.2 %				
Mean Scale Score	*	*	*	*	*	*	*				
% Advanced	*	*	*	*	*	*	*				
% Proficient	*	*	*	*	*	*	*				
% Basic	*	*	*	*	*	*	*				
% Below Basic	*	*	*	*	*	*	*				
% Far Below Basic	*	*	*	*	*	*	*				
<b>CST Mathematics</b>											
Students Tested	7	2	3	7	3	4					
% of Enrollment	1.4 %	0.5 %	0.7 %	1.5 %	0.7 %	0.8 %					
Mean Scale Score	*	*	*	*	*	*					
% Advanced	*	*	*	*	*	*					
% Proficient	*	*	*	*	*	*					
% Basic	*	*	*	*	*	*					
% Below Basic	*	*	*	*	*	*					
% Far Below Basic	*	*	*	*	*	*					
<b>CST Algebra I</b>											
Students Tested							1				1
% of Enrollment							0.2 %				
Mean Scale Score							*				*
% Advanced							*				*
% Proficient							*				*
% Basic							*				*
% Below Basic							*				*
% Far Below Basic							*				*
<b>CST History - Social Science Grade 8 Cumulative</b>											
Students Tested							1				
% of Enrollment							0.2 %				
Mean Scale Score							*				*
% Advanced							*				*
% Proficient							*				*
% Basic							*				*
% Below Basic							*				*
% Far Below Basic							*				*
<b>CST Science - Grade 5, Grade 8, and Grade 10 Life Science</b>											
Students Tested				7			1				
% of Enrollment				1.5 %			0.2 %				
Mean Scale Score				*			*				*

% Advanced	*	*
% Proficient	*	*
% Basic	*	*
% Below Basic	*	*
% Far Below Basic	*	*

---

[Print Report](#)

California Department of Education

©2007 California Department of Education

Page generated 5/15/2007 12:17:06 PM

# California Standardized Testing and Reporting (STAR)

## Los Altos Elementary District

### English Learners Enrolled in CA Public Schools 12 Months or More

Total Enrollment on First Day of Testing: 3,174  
 Total Number Tested: 3,159  
 Total Number Tested in Selected Subgroup: 105

County Name: Santa Clara County  
 District Name: Los Altos Elementary District  
 School Name: ----  
 CDS Code: 43-69518-0000000

### California Standards Test Scores - 2006

#### Grades

	2	3	4	5	6	7	8	9	10	11	EOC
<b>Reported Enrollment</b>	495	412	430	455	425	491	466				
<b>CST English-Language Arts</b>											
Students Tested	30	16	15	11	10	9	14				
% of Enrollment	6.1 %	3.9 %	3.5 %	2.4 %	2.4 %	1.8 %	3.0 %				
Mean Scale Score	360.0	334.9	373.3	306.5	*	*	333.1				
% Advanced	23 %	13 %	40 %	0 %	*	*	14 %				
% Proficient	40 %	31 %	40 %	9 %	*	*	21 %				
% Basic	17 %	25 %	7 %	64 %	*	*	29 %				
% Below Basic	10 %	6 %	13 %	9 %	*	*	29 %				
% Far Below Basic	10 %	25 %	0 %	18 %	*	*	7 %				
<b>CST Mathematics</b>											
Students Tested	30	16	15	11	10	8					
% of Enrollment	6.1 %	3.9 %	3.5 %	2.4 %	2.4 %	1.6 %					
Mean Scale Score	411.3	394.4	416.3	309.7	*	*					
% Advanced	59 %	38 %	53 %	0 %	*	*					
% Proficient	21 %	38 %	27 %	9 %	*	*					
% Basic	7 %	13 %	13 %	73 %	*	*					
% Below Basic	10 %	13 %	7 %	9 %	*	*					
% Far Below Basic	3 %	0 %	0 %	9 %	*	*					
<b>CST General Mathematics (Grades 6 &amp; 7 Standards)</b>											
Students Tested							6				6
% of Enrollment							1.3 %				*
Mean Scale Score							*				*
% Advanced							*				*
% Proficient							*				*
% Basic							*				*
% Below Basic							*				*
% Far Below Basic							*				*
<b>CST Algebra I</b>											
Students Tested							8				8
% of Enrollment							1.7 %				*
Mean Scale Score							*				*
% Advanced							*				*
% Proficient							*				*
% Basic							*				*
% Below Basic							*				*
% Far Below Basic							*				*
<b>CST History - Social Science Grade 8 Cumulative</b>											
Students Tested							14				
% of Enrollment							3.0 %				
Mean Scale Score							338.1				

% Advanced		14 %
% Proficient		29 %
% Basic		21 %
% Below Basic		21 %
% Far Below Basic		14 %

**CST Science - Grade 5, Grade 8, and Grade 10 Life Science**

Students Tested	11	14
% of Enrollment	2.4 %	3.0 %
Mean Scale Score	306.7	333.6
% Advanced	0 %	29 %
% Proficient	9 %	7 %
% Basic	64 %	29 %
% Below Basic	18 %	29 %
% Far Below Basic	9 %	7 %

---

[Print Report](#)

California Department of Education

©2007 California Department of Education

Page generated 5/15/2007 12:17:46 PM

# California Standardized Testing and Reporting (STAR)

## Los Altos Elementary District

### English Learner

Total Enrollment on First Day of Testing: 3,174  
 Total Number Tested: 3,159  
 Total Number Tested in Selected Subgroup: 132

County Name: Santa Clara County  
 District Name: Los Altos Elementary District  
 School Name: ---  
 CDS Code: 43-69518-0000000

## California Standards Test Scores - 2006

### Grades

	2	3	4	5	6	7	8	9	10	11	EOC
<b>Reported Enrollment</b>	495	412	430	455	425	491	466				
<b>CST English-Language Arts</b>											
Students Tested	37	18	18	17	13	13	15				
% of Enrollment	7.5 %	4.4 %	4.2 %	3.7 %	3.1 %	2.6 %	3.2 %				
Mean Scale Score	350.9	339.4	362.6	325.8	333.3	301.3	334.6				
% Advanced	19 %	17 %	33 %	12 %	8 %	0 %	13 %				
% Proficient	35 %	28 %	39 %	18 %	25 %	0 %	27 %				
% Basic	22 %	28 %	11 %	47 %	50 %	58 %	27 %				
% Below Basic	11 %	6 %	11 %	6 %	8 %	33 %	27 %				
% Far Below Basic	14 %	22 %	6 %	18 %	8 %	8 %	7 %				
<b>CST Mathematics</b>											
Students Tested	37	18	18	18	13	12					
% of Enrollment	7.5 %	4.4 %	4.2 %	4.0 %	3.1 %	2.4 %					
Mean Scale Score	406.6	401.5	413.7	366.5	361.3	335.3					
% Advanced	53 %	44 %	50 %	24 %	17 %	17 %					
% Proficient	25 %	33 %	33 %	12 %	50 %	8 %					
% Basic	11 %	11 %	11 %	53 %	25 %	42 %					
% Below Basic	8 %	11 %	6 %	6 %	0 %	33 %					
% Far Below Basic	3 %	0 %	0 %	6 %	8 %	0 %					
<b>CST General Mathematics (Grades 6 &amp; 7 Standards)</b>											
Students Tested							6				6
% of Enrollment							1.3 %				*
Mean Scale Score							*				*
% Advanced							*				*
% Proficient							*				*
% Basic							*				*
% Below Basic							*				*
% Far Below Basic							*				*
<b>CST Algebra I</b>											
Students Tested							9				9
% of Enrollment							1.9 %				*
Mean Scale Score							*				*
% Advanced							*				*
% Proficient							*				*
% Basic							*				*
% Below Basic							*				*
% Far Below Basic							*				*
<b>CST History - Social Science Grade 8 Cumulative</b>											
Students Tested							15				
% of Enrollment							3.2 %				
Mean Scale Score							341.5				



% Advanced		13 %
% Proficient		33 %
% Basic		20 %
% Below Basic		20 %
% Far Below Basic		13 %

**CST Science - Grade 5, Grade 8, and Grade 10 Life Science**

Students Tested	18	15
% of Enrollment	4.0 %	3.2 %
Mean Scale Score	326.4	338.2
% Advanced	0 %	33 %
% Proficient	29 %	7 %
% Basic	53 %	27 %
% Below Basic	12 %	27 %
% Far Below Basic	6 %	7 %

---

[Print Report](#)

California Department of Education

©2007 California Department of Education

Page generated 5/15/2007 12:18:26 PM

Print Report

# California Standardized Testing and Reporting (STAR)

## Los Altos Elementary District

### English Only

Total Enrollment on First Day of Testing: 3,174  
 Total Number Tested: 3,159  
 Total Number Tested in Selected Subgroup: 2,358

County Name: Santa Clara County  
 District Name: Los Altos Elementary District  
 School Name: ---  
 CDS Code: 43-69518-0000000

## California Standards Test Scores - 2006

### Grades

	2	3	4	5	6	7	8	9	10	11	EOC
<b>Reported Enrollment</b>	495	412	430	455	425	491	466				
<b>CST English-Language Arts</b>											
Students Tested	373	299	328	316	315	373	348				
% of Enrollment	75.4 %	72.6 %	76.3 %	69.5 %	74.1 %	76.0 %	74.7 %				
Mean Scale Score	417.7	413.5	436.1	416.2	408.9	422.1	412.4				
% Advanced	61 %	60 %	79 %	73 %	67 %	70 %	71 %				
% Proficient	31 %	27 %	16 %	17 %	24 %	23 %	20 %				
% Basic	5 %	11 %	2 %	8 %	6 %	5 %	7 %				
% Below Basic	2 %	2 %	0 %	0 %	2 %	1 %	3 %				
% Far Below Basic	2 %	0 %	2 %	3 %	1 %	1 %	0 %				
<b>CST Mathematics</b>											
Students Tested	373	299	328	316	315	372					
% of Enrollment	75.4 %	72.6 %	76.3 %	69.5 %	74.1 %	75.8 %					
Mean Scale Score	463.7	478.7	446.1	470.9	436.0	428.6					
% Advanced	75 %	81 %	76 %	71 %	62 %	54 %					
% Proficient	18 %	15 %	19 %	19 %	30 %	35 %					
% Basic	5 %	3 %	4 %	4 %	6 %	8 %					
% Below Basic	1 %	1 %	1 %	3 %	1 %	2 %					
% Far Below Basic	0 %	0 %	1 %	2 %	1 %	1 %					
<b>CST General Mathematics (Grades 6 &amp; 7 Standards)</b>											
Students Tested							19				19
% of Enrollment							4.1 %				
Mean Scale Score							317.9				317.9
% Advanced							5 %				5 %
% Proficient							32 %				32 %
% Basic							21 %				21 %
% Below Basic							16 %				16 %
% Far Below Basic							26 %				26 %
<b>CST Algebra I</b>											
Students Tested							326				326
% of Enrollment							70.0 %				
Mean Scale Score							412.2				412.2
% Advanced							37 %				37 %
% Proficient							43 %				43 %
% Basic							14 %				14 %
% Below Basic							5 %				5 %
% Far Below Basic							0 %				0 %
<b>CST History - Social Science Grade 8 Cumulative</b>											
Students Tested							346				
% of Enrollment							74.2 %				
Mean Scale Score							409.6				

% Advanced		65 %
% Proficient		22 %
% Basic		10 %
% Below Basic		2 %
% Far Below Basic		1 %

**CST Science - Grade 5, Grade 8, and Grade 10 Life Science**

Students Tested	316	349
% of Enrollment	69.5 %	74.9 %
Mean Scale Score	407.6	436.8
% Advanced	48 %	70 %
% Proficient	40 %	21 %
% Basic	9 %	7 %
% Below Basic	1 %	2 %
% Far Below Basic	2 %	0 %

---

[Print Report](#)

California Department of Education

©2007 California Department of Education

Page generated 5/15/2007 12:18:54 PM